



**ELECTRIC BRAKE SPECIALISTS**

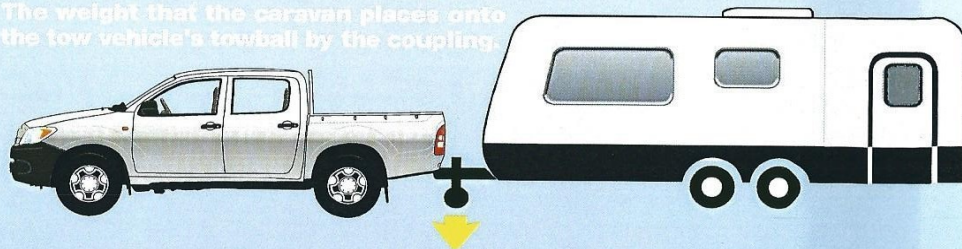
## ARE YOU LEGAL?

DO YOU KNOW WHAT YOUR **CAR & CARAVAN WEIGH?**

ASK US HOW **WE DO!**

### TOWBALL MASS

The weight that the caravan places onto the tow vehicle's towball by the coupling.

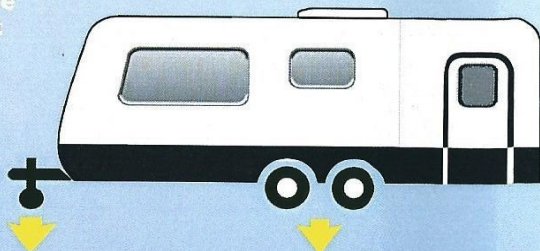


### ATM - AGGREGATE TRAILER MASS

The combined weight (mass) of the caravan when fully loaded and not coupled to the tow vehicle.

(This includes water, gas, clothing etc.)

ATM is specified by the caravan manufacturer.

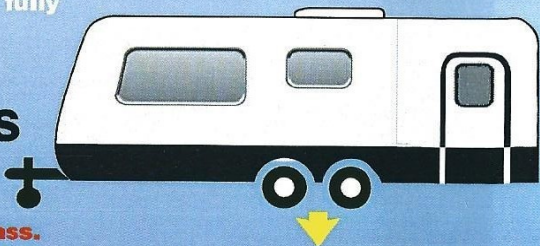


### GTM - GROSS TRAILER MASS

The GTM is the weight (mass) of a fully loaded caravan.

**INCLUDES WATER  
FOOD, GAS, TOOLS  
CLOTHING, ETC**

This does not include the towball mass.



**CALL US NOW on 8263 0600**

14 Braeside Ave Holden Hill SA



**ELECTRIC BRAKE SPECIALISTS**

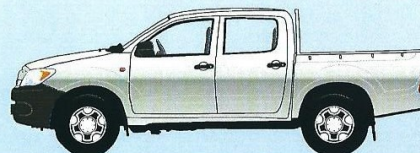
## ARE YOU LEGAL?

DO YOU KNOW WHAT YOUR **CAR & CARAVAN WEIGH?**

ASK US HOW **WE DO!**

### GVM - GROSS VEHICLE MASS

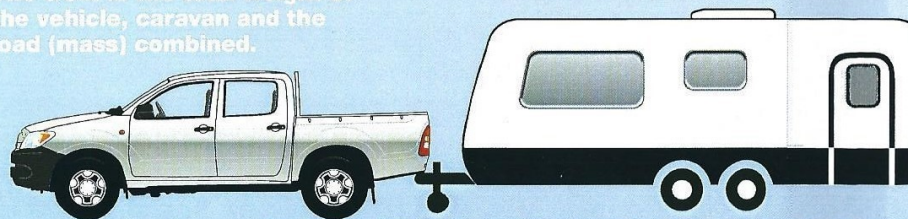
The GVM is the maximum weight of the vehicle as specified by the manufacturer including bull bar, towbar, fuel, passengers, luggage etc.



**INCLUDES PEOPLE  
& LUGGAGE**

### GCM - GROSS COMBINATION MASS

The GCM is the total weight of the vehicle, caravan and the load (mass) combined.



**INCLUDES PEOPLE & LUGGAGE**

GCM cannot exceed the vehicle manufacturer's specifications.

### IWM - INDIVIDUAL WHEEL MASS

IWM is the weight (mass) of each individual wheel of the caravan to achieve maximum on road stability.



Load your caravan evenly to stop sway and suspension damage.

**CALL US NOW on 8263 0600**

14 Braeside Ave Holden Hill SA